

Chatfield Clarke

Floor-to-Ceiling Tackboard Panels



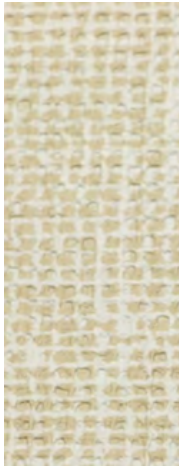
Color Card



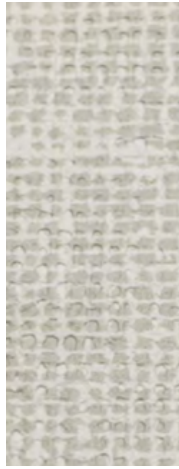
Chatfield Clarke Colors

(Colors in stock)

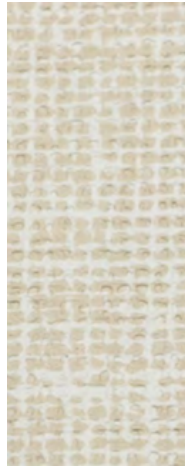
Belair



Opal



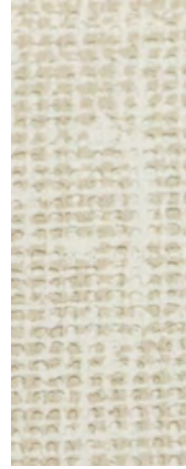
Misty Grey



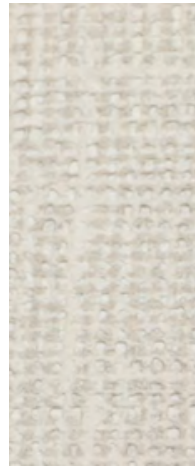
White Cap



Off-White



Beige



Snowbank

Group 1, Type 1, 15 oz

Harborweave



Pelican



Frosty



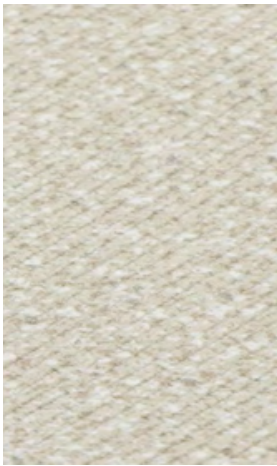
Grey Feather



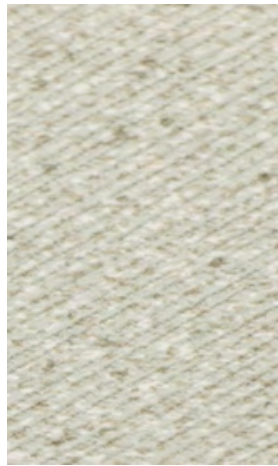
Feather Down

Group 2, Type 1, 18 oz

Spellbound

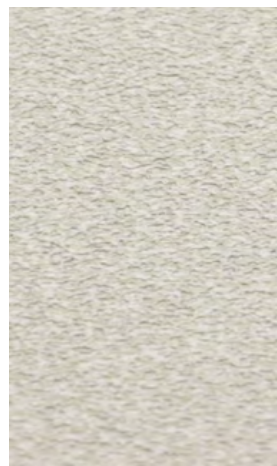


Kasper

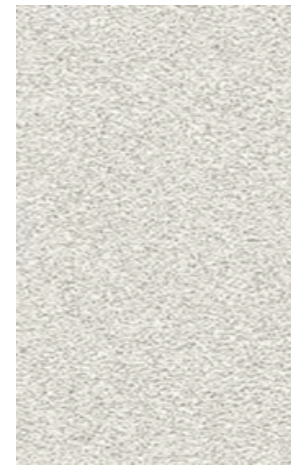


Sprite

Ceres



Flint



Fog

Group 2, Type 1, 15 oz

Koroseal School Collection

(Check with our team for stock)

Insight



Linen 6323-15



Galaxy 6323-45



Illuminating 6323-90



Links 6323-75

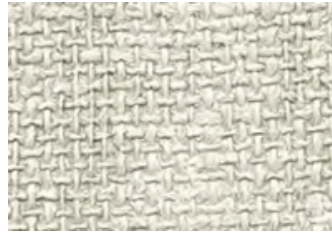
Harborweave II



Atrium 2123-00



Winter Mist 2123-14



Moonlight 2123-92



Sea Mist 2123-97

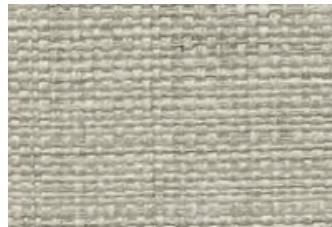
Authenticity



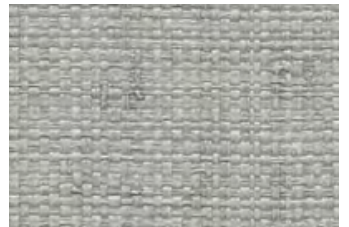
This Side of Paradise 2023-05



Treasure Island 2023-71



Wuthering Heights 2023-92



Picture of Dorian Grey 2023-72

Interloom



Luster NM23-07



Hazelwood NM23-12

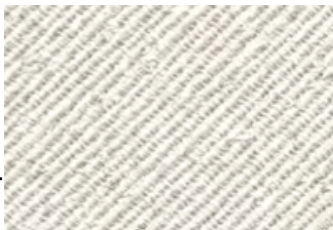


Haze NM23-05

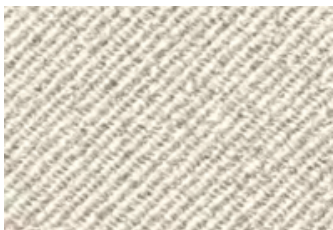


Nimbus NM23-10

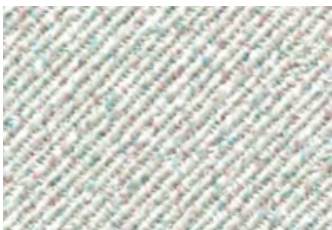
Spellbound



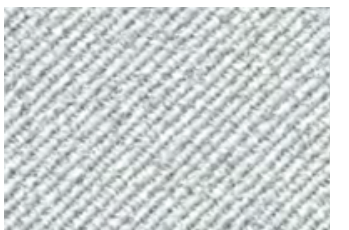
Apollo 8823-03



Chant 8823-12

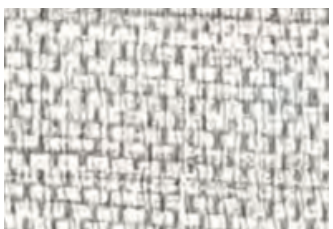


Destiny 8823-78

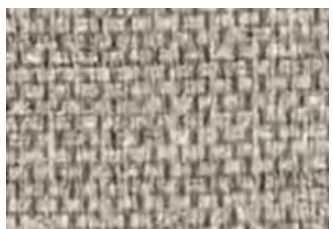


Delta 8823-71

Ramie



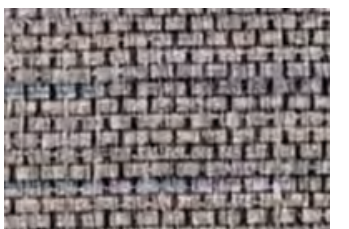
Mesh 8223-02



Spun 8223-03



Tangle 8223-07



Pivot 8223-12

Value Program Colors

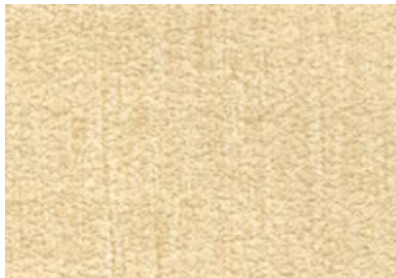
(Check with our team for Stock)

Buechel



Pure White VPBC-03

Newburg



Sand Castle VPNB-04



Swan VPNB-02

Crescent Hill



Lush VPCH-08



Alpaca VPCH-01



River Stone VPCH-04

Hurstbourne



Iconic Grey VPHB-07



Mink VPHB-01



Inkwell VPHB-05

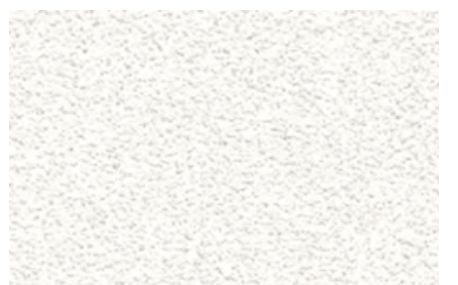
Strathmoor



Luna VPST-04



Whipped Cream VPST-07



Snow Caps VPST-05

Valley Station



Coconut VPVS-06



Barley VPVS-02



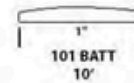
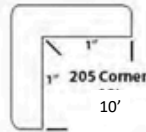
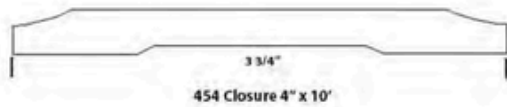
Sand Drift VPVS-04



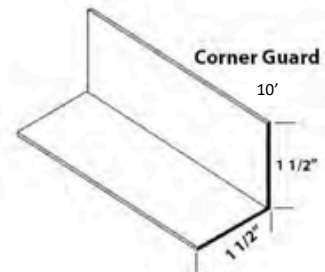
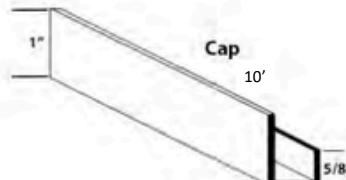
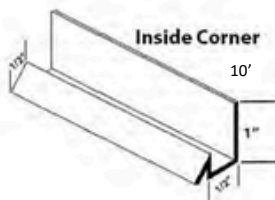
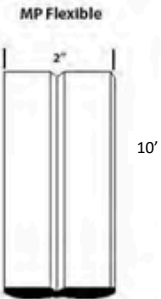
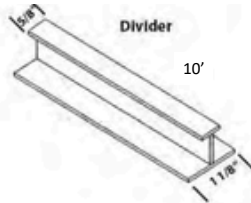
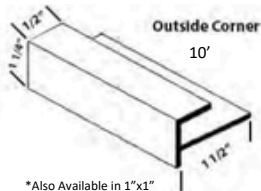
Mushroom VPVS-07

Molding Options

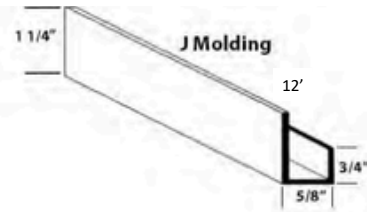
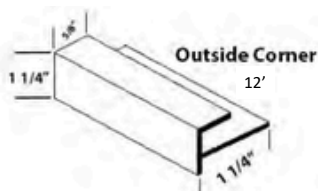
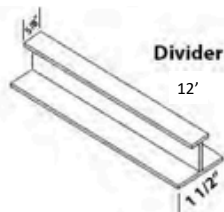
Wood Moldings (wrapped to match)



PVC Moldings (wrapped to match)



Aluminum Moldings (satin finish)



Tackboard Specifications



3875 Embassy Parkway
Fairlawn, Ohio 44333

54" Contract
Vinyl Wallcoverings

100% Water-Based Inks, Cadmium Free

	Group 1	Group 2
Physical Properties	U.S. Units	U.S. Units
Total Weight	15 oz. PLY 10 oz. PSY	15 oz. PLY 10 or 12 oz. PSY
Roll Width	53/54"	53/54"
Thickness	.007"	.0085"
Fabric	Sheeting	Sheeting
Federal Specification	CCC-W-408A, Type I	CCC-W-408A, Type I
CFFA Specification	CCC-W-101-D, Type I, Class A	CCC-W-101-D, Type I, Class A
NFPA 101 Life Safety Code	Meets Class A when tested on GRC Board	Meets Class A when tested on GRC Board



Larger Samples On Request

The Koroseal® brand wall covering meets or exceeds all requirements of Federal Specifications CCC-W-408A and the CFFA Quality Standard For Vinyl Coated Fabric Wallcovering CFFA-W-101A, and the standard Classification of Wallcoverings by Durability Characteristics of ASTM F793-06 for the type and category classified including 24 hour cleanability tests based on ASTM method D1308.

Vinyl Wall Coverings Shall Contain Mildew Inhibitors

Vinyl wallcoverings shall be treated with an antimicrobial to resist the growth of mildew and bacteria including staphylococcus aureus, streptovorticillum reticulum (pink stain), and mixed fungal spore such as aspergillus niger, aspergillus flavus, penicillium funiculosum and Chaetomium globosum.

Colorations

The colors selected for this product results from research with the design community on color needs and trends for coordination with the latest in carpeting, laminates, furniture, and contract fabrics.

Attention: As a result of environmental conditions, all boards are subject to expansion and/or contraction due to the nature of the product. A divider bar is recommended between all panels. If not used, Chatfield Clarke will not be responsible for any buckling or gaps due to expansion and/or contraction of the panels.. **ALL PRODUCT IS MADE TO ORDER, THEREFORE, ALL SALES ARE FINAL.**

Koroseal Wallcoverings, a division of RJF International Corporation

© RJF International Corporation

Tackboard Specifications

Vinyl Tackboard Specification

Vinyl covered tackboard substrate shall be industrial insulation board 1/2" by full height and shall be manufactured specifically as a substrate for vinyl covered wall panels. The board shall be asphalt free, shall have an ironed-on coating, and have a density of 6 pounds per cubic foot. Edges are square without bevel (beveled available on request). The vinyl coatings shall be made of virgin vinyl calendered base color, weighing a minimum of 15 oz. per lineal yard. The coating shall be backed with sheeting or non-woven fabric. The vinyl wallcovering shall be mechanically laminated, with the long edges wrapped to the back of the tackboard. The panels will be applied over 1/2' Gypsum board or 3/8" plywood sheeting. The vinyl covered tackboard shall be a class II flame spread rating.

Reference brand: Chatfield Clarke (909) 823-4297

Care shall be taken in mounting the tackboard so that the texture of all panels will have the same orientation and color match.

Vinyl Tackboard Panels

Vinyl is machine laminated to a lightweight wood fiber panel 1/2" thick, and is wrapped around the long edges. Panel edges are normally square cut; beveled edges are available on special order. Total weight of panel is approximately 900 lbs. per 1000 sq. ft.

Colors shown are normally stocked. Other colors are available on special order.

Flame Resistant Industrial Insulation Board (FRIIB) - Available Upon Request

When tested in accordance with ASTM E84 – 18b, Fire Rated Tackboard Panels resulted in a **Class A**.

Flame Spread – 25

Smoke Development - 30

Standard Sizes

48"x	84"	96"	102"	108"	120"	144"
	7'	8'	8.5'	9'	10'	12'

Test Result On Completed Panels

When tested in conformance with specifications set forth in ASTM Designation E-84-18b, vinyl covered tackboards yielded the following results:

Flame Spread 65

Smoke Density..... 175-350*

*The flammability testing data, conclusions and recommendations in this report relate solely to measurements and descriptions of the properties of materials, products, or systems in response to heat and flame under controlled laboratory conditions and should not be considered or used for the description, appraisal, or regulations of the fire hazard of materials, products, or systems under actual fire condition.